

Case Study: Refurbishment Services

Coventry & Solihull Waste Disposal Company (CSWDC)

Client: CSWDC

Project: Painting & Flooring Project

Project Description

Coventry & Solihull Waste Disposal Company (CSWDC), based in Coventry have been operating in the city since 1975. They extract energy, (both heat and electrical power) from municipal and commercial solid waste. The company is also a household waste recycling and reuse centre on behalf of Coventry City Council.

With high volumes of waste entering the site Zenith Contract Services Limited were asked to prepare and paint all accessible steel surfaces inside six levels of the plant room. Due to the size of this project, it was completed in a 3-month period. Throughout the time of the project the plant remained in full operation 24/7.

The project entailed the use of fixed scaffolding as well as the use of a specialist machine called a spider allowing access to parts of the plant that are not easily accessible. The spider needed to be dismantled, moved in and then re-assembled inside, as the size of the machine was too large to fit through the trap door.

Zenith were also heavily involved with the project as they prepared and painted the main plant room floor as well as the chequer plate walkways.

Working efficiently and to a tight deadline as the project needed to be completed in time for the Waste Energy European Assembly visit that CSWDC hosted over a week in June.

Zenith met the deadline and the client was extremely happy with the high standard of work carried out.



Further images are featured on the following page.

Products & Systems Used

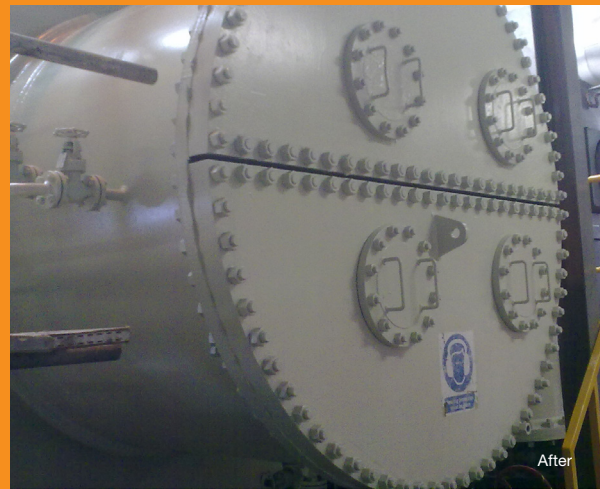
Johnstones Paints (Steel & Cladding, Oil Base

Undercoat and Gloss

Dacrylate QD3s



Before



After

