

## Case Study: Seamless Flooring Systems

# Wolverhampton driveway that delivers the 'wow' factor

Project: Driveway for Residential House

Commenced: October 22

Works Duration: 1 Week

Area Coverage: 330 Square Metres

### Project Description

Zenith's brief was to install a driveway and pathway that delivered the 'wow' factor at a residential house within Penn, Wolverhampton. The client owns a tarmac business and had already installed a new tarmac base and drains, but required a specialist contractor to supply and install a professional, decorative finish. We were recommended by a long-standing customer, and we were happy to advise on and complete the job.

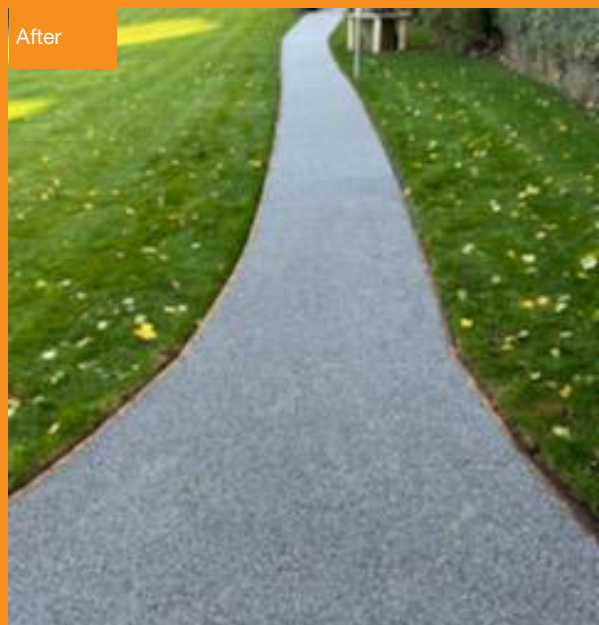
Our team used a trowel-applied, resin-bound, decorative quartz system supplied by Vebro, which is designed for both internal and external use. Vebro PU binder AR, a resin used to bind decorative aggregate and Vebro decorative stone, blended in a combination of colours selected by the client to blend with the house was installed to a depth of 10mm on top of the existing tarmac base.

As the job was external, all products selected were UV stable. Being a UV-stable mix means it is unaffected by UV radiation and the finished product is extremely resistant to discolouring or fading. Resins of this specification are most commonly known for their longevity and ability to be easily cleaned as well as being durable and weather-resistant.

Before



After



Further details can be found on the following page.

The final product will not soften in heat or freeze in minus temperatures, weeds cannot grow through the resin and it is resistant to fuel and oil spillages. There are a few notable factors that contribute to the longevity of this type of surfacing. Due to their chemical makeup, UV-stable resins provide flexibility, therefore, being able to resist cracking throughout its entire lifespan making it a popular choice for consumers and developers alike.

The job required both the driveway and garden pathway to be completed to the same level of finish and the client was delighted by the results, which were completed on time and to budget, providing the 'wow' factor specified.

As an approved installer of many of the UK's leading resin manufacturers, we have proven expertise in delivering internal and external flooring that utilises advanced materials and installation methods, ensuring a finish that is strong, durable and easy to maintain, ensuring longevity while meeting the client's desired look and feel.

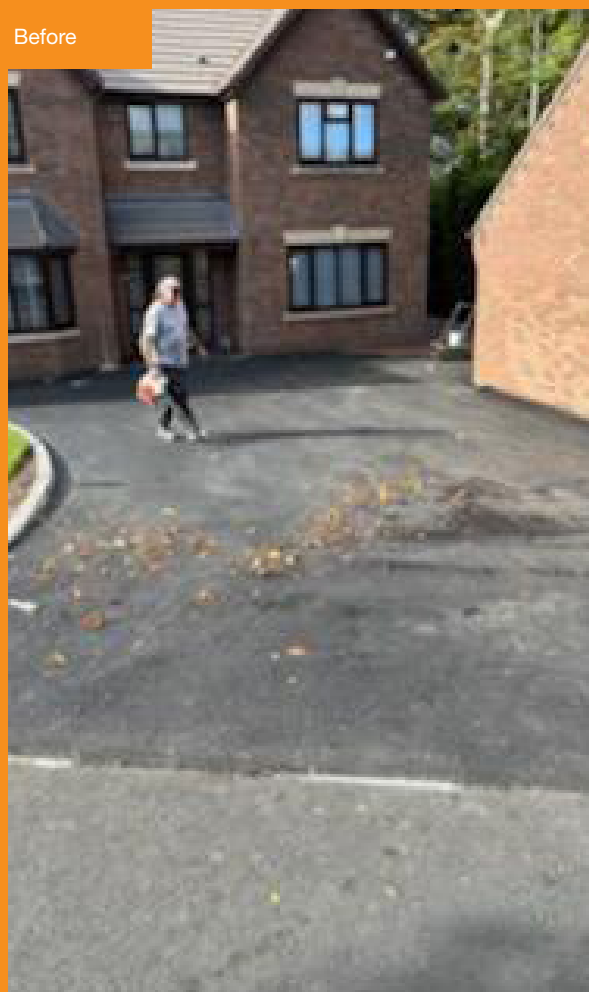
With more than 25 years' experience, our team has the know-how to work with existing conditions, identifying any potential issues and advising on the optimum solution for the job, ensuring a bespoke, high quality seamless finish.

---

### Contact

For more information, please call us on 024 7668 7167 or email [info@zenithcontractservices.co.uk](mailto:info@zenithcontractservices.co.uk)

Before



After

