

## Case Study: Refurbishment Services

# Large Midlands press factory requires major refurbishment

Project: Press Factory, Serotec Group Holdings Ltd

Commenced: March 2024

Works Duration: 2 weeks (Phase 1)

Products: Johnstone's Performance Ultra Primer and Finish, Johnstone's Acrylic Durable Eggshell, Johnstone's Performance Zinc phosphate primer, Johnstone's Performance semi-gloss Topcoat

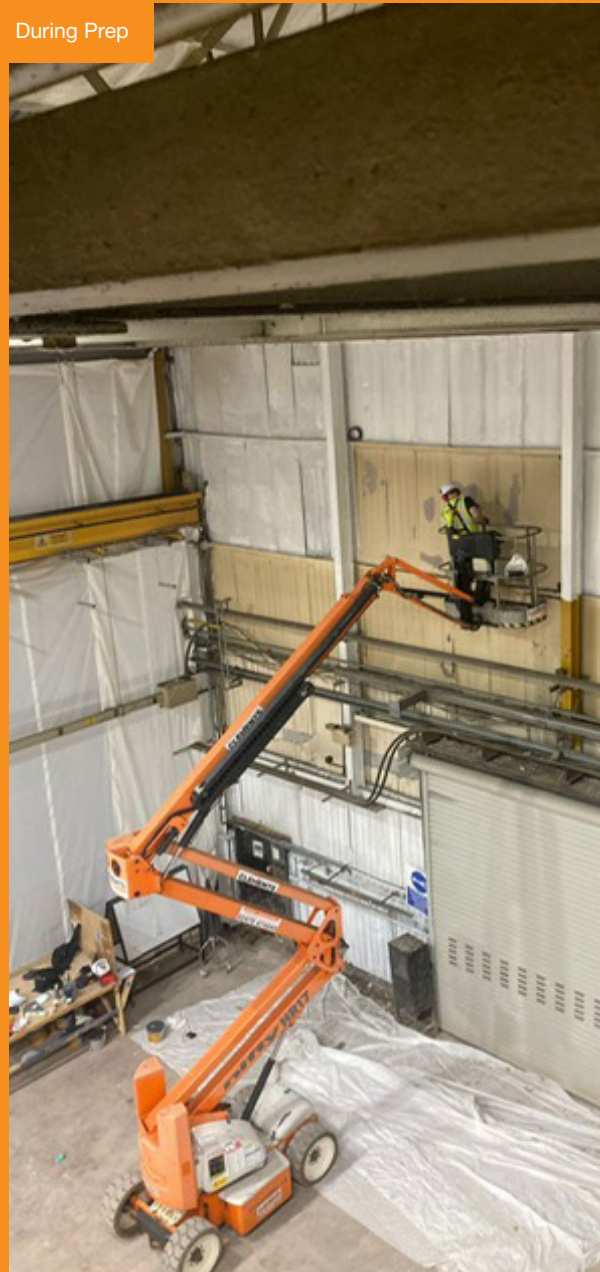
### Project Description

Zenith's Industrial Painting Division was called in to assist with the major and ongoing refurbishment at large Midlands press factory for Serotec Group Holdings Ltd. Andy Creswell, Engineering and Facilities Manager SHS comments:

"This being a significant investment in new stamping technology, we wanted the area to be the flagship standard for a pressings factory."

Zenith specified Johnstone's industrial coatings to prepare and redecorate the roof panels, upper wall linings and steel roof trusses. Initial preparation was carried out by hand scraper and wire brush to remove all loose and/or friable materials then industrial paint was applied using rollers and brushes, as spraying was deemed unsuitable.

During Prep



Further details can be found on the following page.

Johnstone's Ultra Primer & Finish was specified for the roof panels as it is a high performance, quick drying, alkali resisting primer and finish that is manufactured from high quality pigments and tough acrylic resin with enhanced stain blocking properties. It primes and seals porous surfaces as well as offering great adhesion to difficult to apply surfaces including galvanised metal, to provide a fast drying, low odour, durable finish.

To minimise disruption to the ongoing set up of the area, all work was undertaken during night shifts and weekends working off cherry pickers, operated by Zenith's fully trained operatives, who hold IPAF qualifications to operate mobile elevated working platforms.

Andy Creswell from Sertec commented:

"I wanted to thank Zenith for the excellent work performed on our new project. I appreciate the flexibility of the team working nights and weekends so we could maintain our tasks during the day. Working under CDM regulations there were no H&S concerns, and all documentation was exact. The finished area is far better than I expected, and I look forward to when we remove the boundary curtain for you to return and paint all the building steelwork. Again, thank you for the support, and as you will see from the photos it really has improved the area."

Whatever the requirements of the job, Zenith's Commercial Painting and Decorating Division is always happy to work collaboratively and flexibly to suit requirements and minimise disruption, utilising the latest products and most appropriate techniques to ensure a high-quality finish designed to withstand the toughest environments.

#### Contact

For more information, please call us on 024 7668 7167 or email [info@zenithcontractservices.co.uk](mailto:info@zenithcontractservices.co.uk)

After

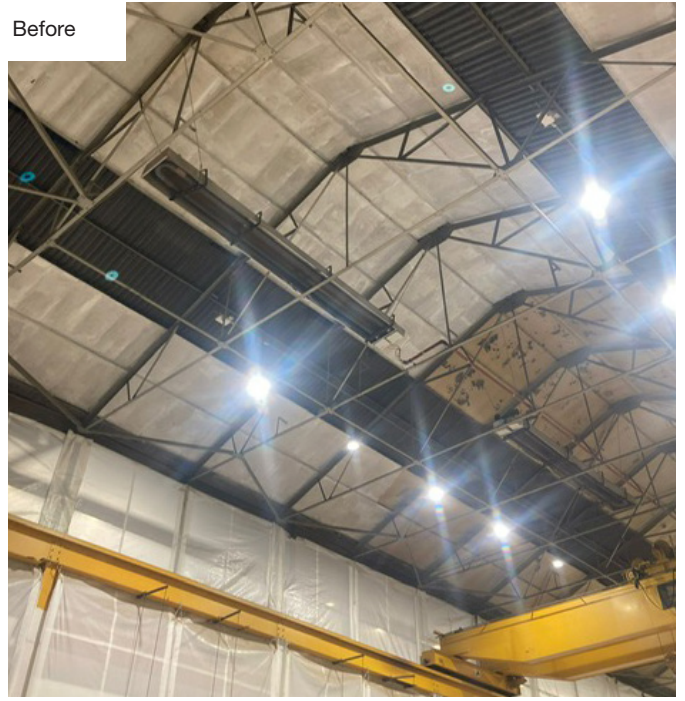


Further images can be found on the following page.

Before



Before



After

