

## Case Study: Seamless Flooring Systems

# New Floor Plinths and Coving in Chiller Rooms

Client: Leading Savoury Quiche Producer

Project: Floor Plinths and Coving Installation for Chiller Facility

Project Value: £6,000

Products: KDR Polyscreed HF and Polyscreed Cove Grade

Area Coverage: 40 square metres

### Project Description

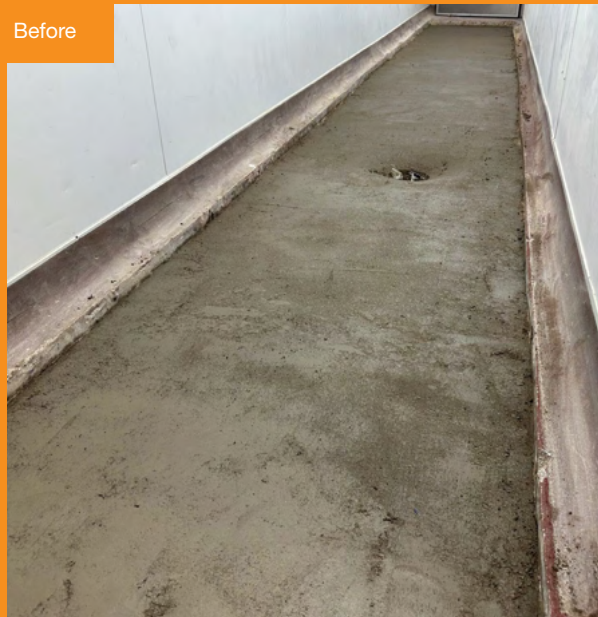
A prominent producer of savoury quiches approached Zenith Contract Services to enhance their chiller rooms with robust floor plinths and coving. Given the high-traffic environment with frequent small, wheeled traffic, durability and ease of maintenance were top priorities.

### Project Execution

To meet the client's specific needs for low-temperature operation and high durability, Zenith selected KDR Polyscreed HF and Polyscreed cove grade polyurethane resin. These products offer the necessary resilience and slip resistance for environments subject to frequent traffic and cold conditions.

In addition to the polyurethane screed, stainless steel trims were installed along the edges of the raised plinths. This provided an additional layer of reinforcement and a sleek, professional finish.

Before



After



Further details can be found on the following page.

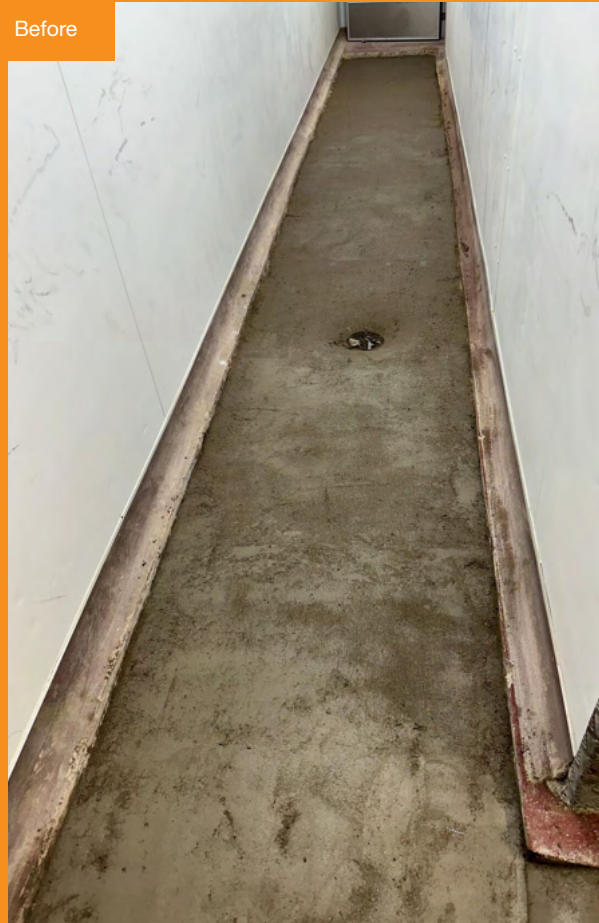
## Outcome

The project was completed on time and within budget, fulfilling all client requirements. The new flooring and coving in the chiller facility offer a hardwearing, low-maintenance solution that supports the client's production needs, while the stainless-steel edging delivers an added touch of quality. Zenith Contract Services is proud to have delivered a solution that combines functionality and aesthetics in this critical area of production.

## Contact

For more information, please call us on 024 7668 7167 or email [info@zenithcontractservices.co.uk](mailto:info@zenithcontractservices.co.uk)

Before



During Prep



After

